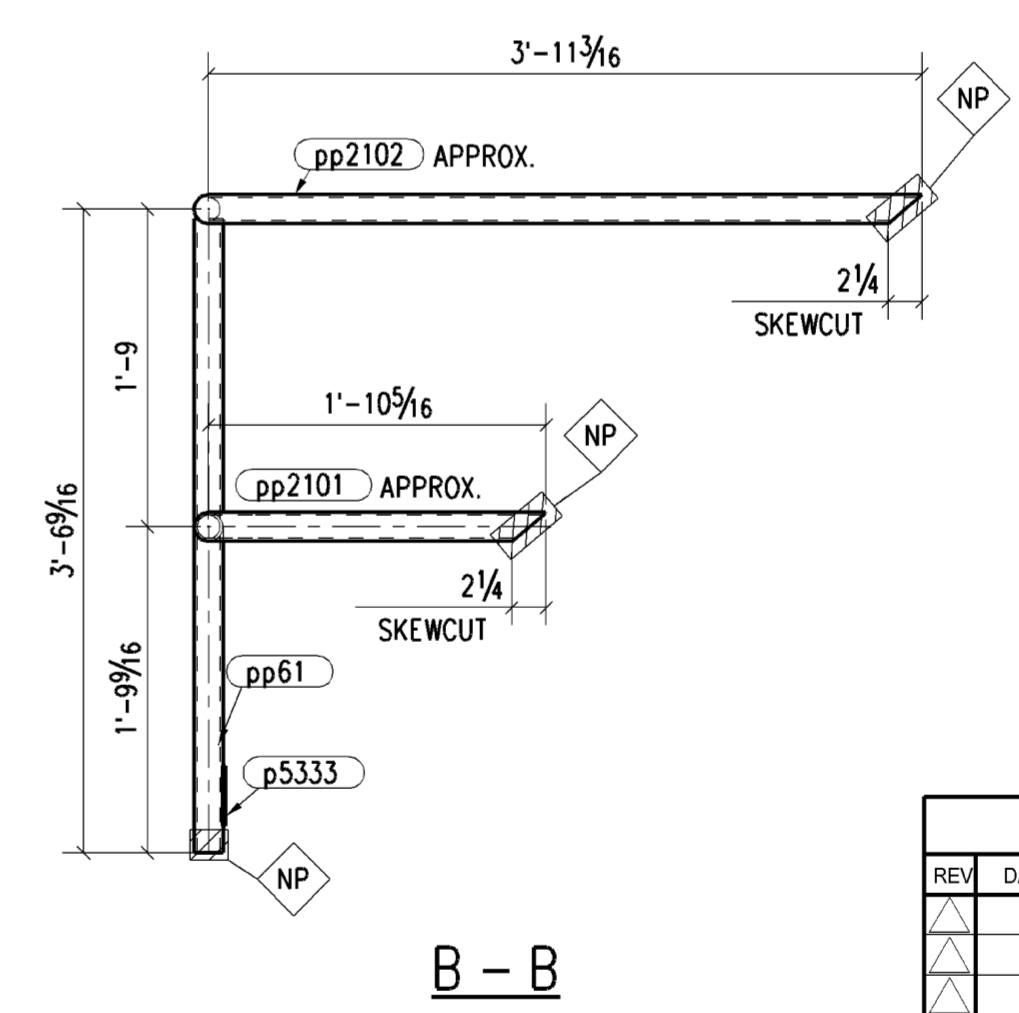
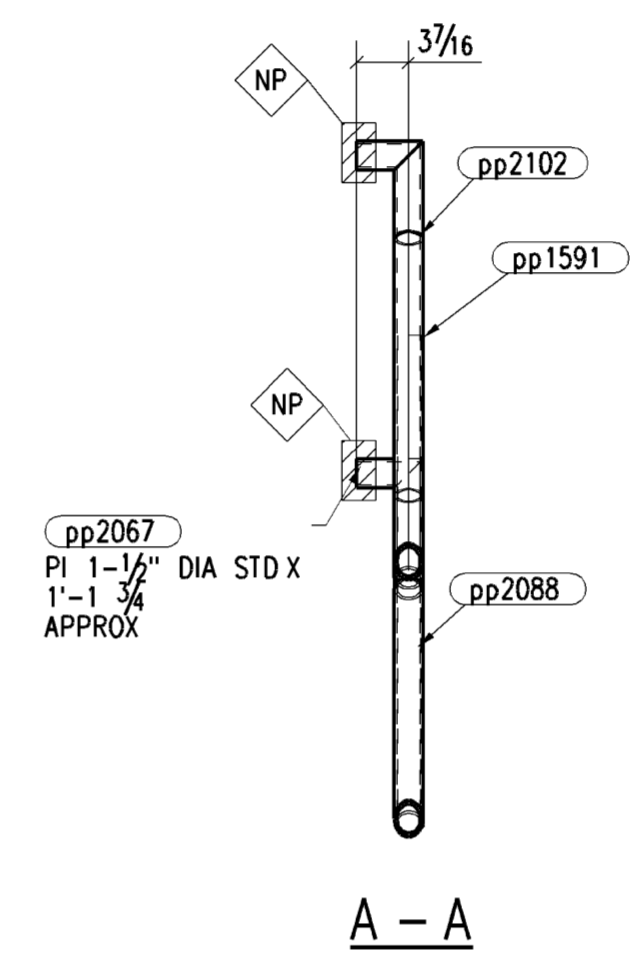
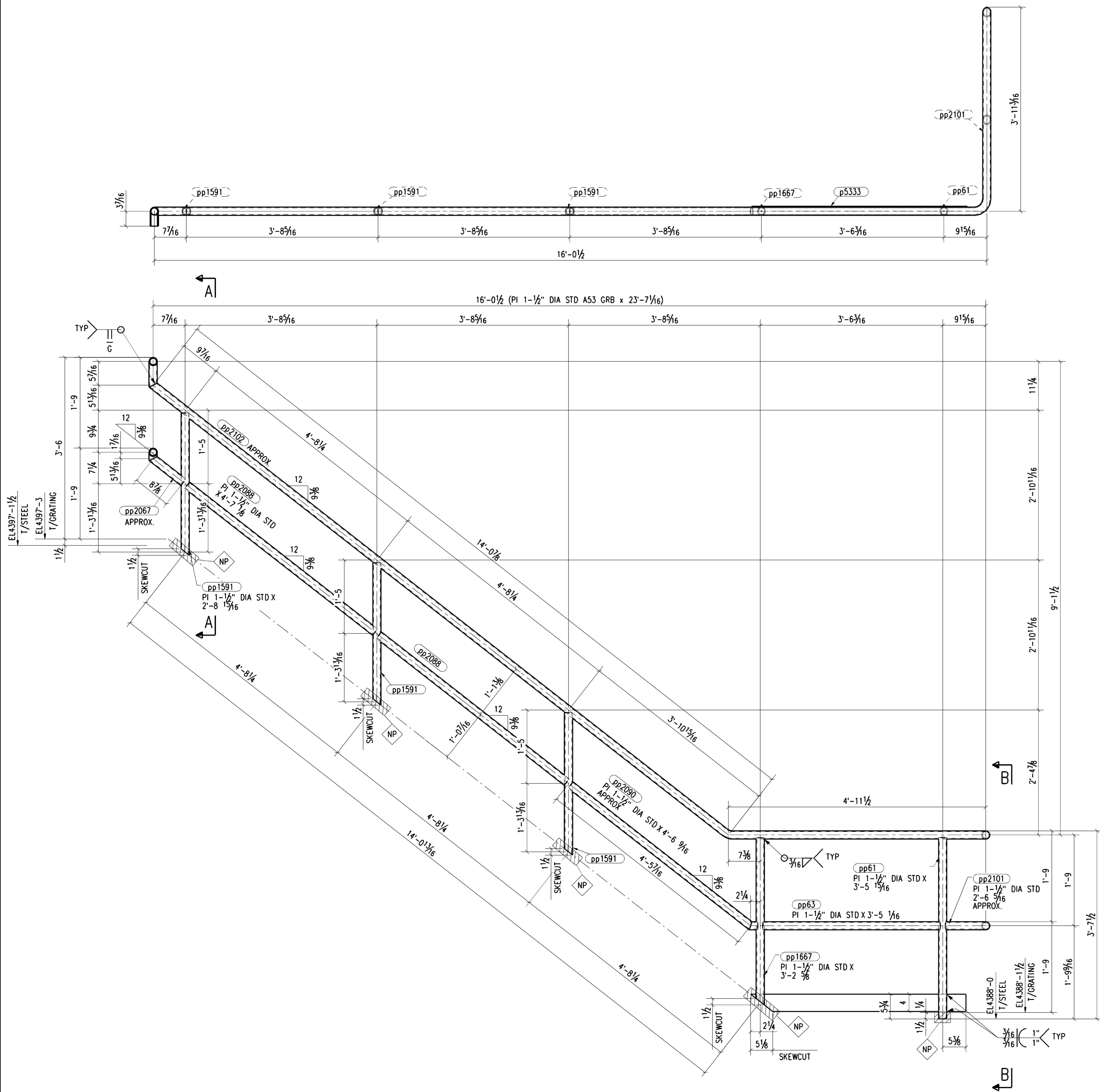


BILL OF MATERIAL						
ABM	MARK	QTY	SHAPE	LENGTH	STEEL GRADE	REMARKS
PG-LN		TOTAL				
						APPROX.
	29824H1	1	HANDRAIL(23'-3")			
	pp2102	1	PI 1-1/2" DIA STD	23'-7 1/16"	A53 GRB	60.2
	p5333	1	FL3/16"x4"	4'-1 13/16"	A36	10.0
	pp61	1	PI 1-1/2" DIA STD	3'-5 15/16"	A53 GRB	8.9
	pp63	1	PI 1-1/2" DIA STD	3'-5 1/16"	A53 GRB	8.7
	pp1591	3	PI 1-1/2" DIA STD	2'-8 15/16"	A53 GRB	21.0
	pp1667	1	PI 1-1/2" DIA STD	3'-2 5/8"	A53 GRB	8.2
	pp2067	1	PI 1-1/2" DIA STD	1'-1 3/4"	A53 GRB	2.9
	pp2088	2	PI 1-1/2" DIA STD	4'-7 1/8"	A53 GRB	23.5
	pp2090	1	PI 1-1/2" DIA STD	4'-8 9/16"	A53 GRB	11.6
	pp2101	1	PI 1-1/2" DIA STD	2'-6 5/16"	A53 GRB	6.5
						TOTAL WEIGHT
						162

TOTAL QTY	MARK	SHOP BOLTS	LENGTH	TOTAL QTY	MARK	FIELD BOLTS	LENGTH



1 ~ HANDRAIL(23'-3") ~ 29824H1

REVISION AND DISTRIBUTION BOX				
REV	DATE	DESCRIPTION	BY	TO APPL

DRAWINGS ARE SUBMITTED FOR APPROVAL IN ACCORDANCE WITH AISC MANUAL NINTH EDITION - PAGE 5-229 PARAGRAPH 4.2 AND PAGE 5-250 SECTION 4.

SHOP NOTES:

- 1) ALL RUNNING DIMENSIONS ARE TAKEN FROM THE \blacklozenge LINE
- 2) ALL GAS RE-ENTRANT CUTS WILL HAVE A RADIUS OF 1/2" UNLESS NOTED
- 3) ALL SHOP BOLTS SHALL BE SNUG TIGHT UNLESS NOTED

MATERIAL : ASTM A36 UNLESS NOTED
WELD : E70XX - LH ELECTRODES
OPEN HOLES : 15/16" UNLESS NOTED
PAINT : PREP - COMMERCIAL BLAST CLEAN IN ACCORDANCE WITH SSPC-SP6
PRIME - ONE COAT INORGANIC ZINC
FINISH : NONE

BOLTS : 7/8" DIA A325SC-X, CLASS B (UNLESS NOTED)

DWG DESCRIPTION: HANDRAIL DETAILS REF E-PLAN

Harbee Structures Private Limited
www.harbeestructures.com

CUSTOMER: _____ JOB NO. _____ EXTRA NO. _____
JOB TITLE: _____ DWG. NO. _____ REV. NO. _____
JOB LOCATION: _____ 29824H
DWG. BY: _____ DATE: _____ CHK. BY: _____ DATE: _____

NO PRIME COAT
NO TOP COAT
NO TOP COAT
PRIMER REQ'D