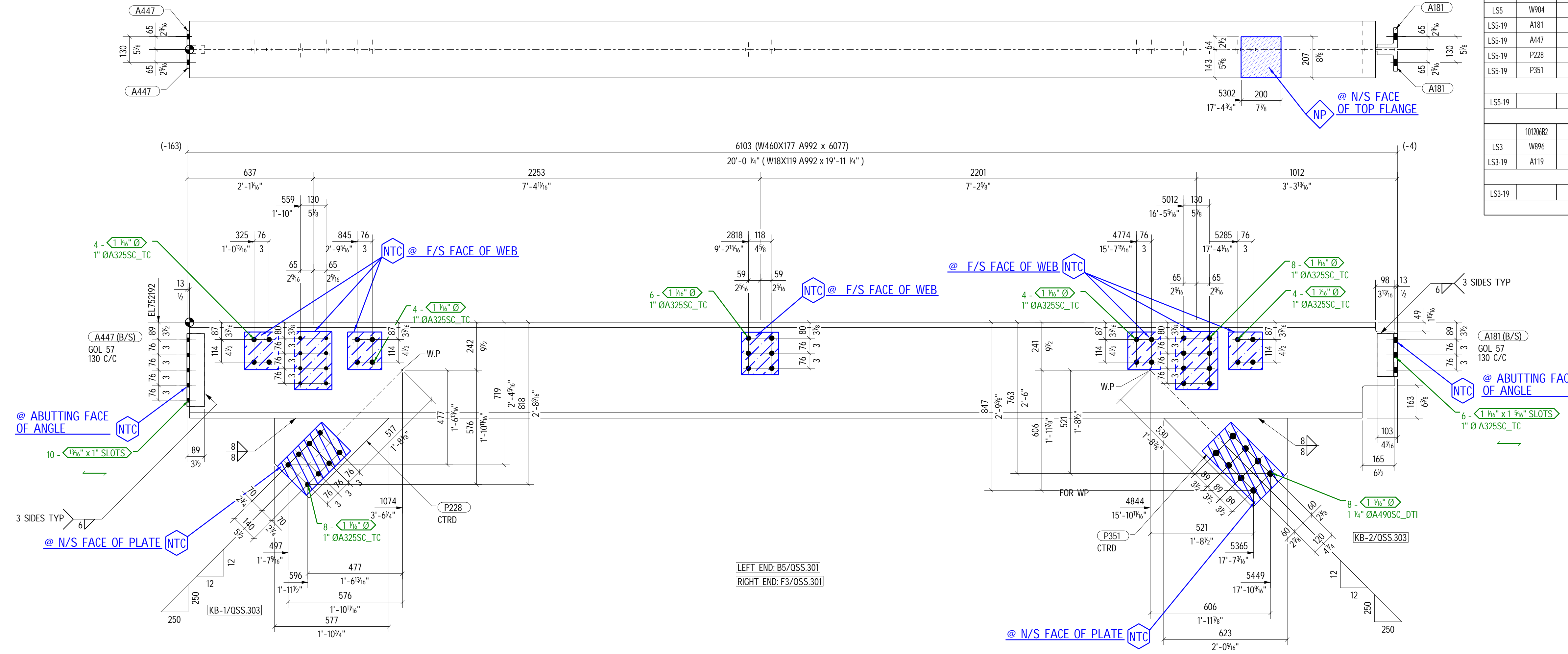
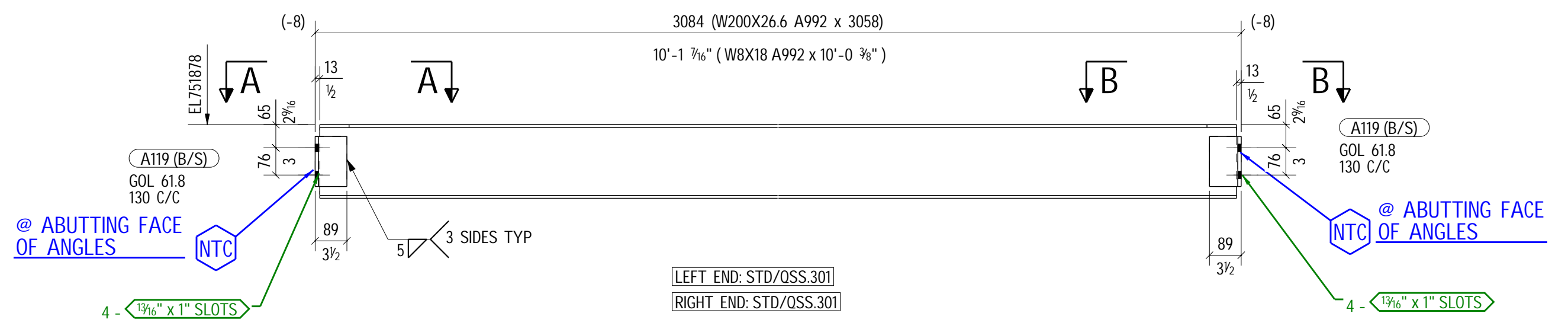


**BILL OF MATERIAL**

COST CODE	MARK	QTY TOTAL	SHAPE (Metric)	LENGTH (mm)	STEEL GRADE	SHAPE (Imperial)	LENGTH (Imperial)	REMARKS	WEIGHT TOTAL (Lbs)	WEIGHT TOTAL (Kg)
LSS	W904	1	W460X177	6077	A992	W18X119	19'-11 1/4"		2371	1076
LSS-19	A181	2	L102X102X19	216	A572-50	L4X4X3/4	0'-8 1/2"		26	12
LSS-19	A447	2	L89X89X13	368	A572-50	L3-1/2X3-1/2X1/2	1'-2 1/2"		26	12
LSS-19	P228	1	PL16X403	577	A572-50	PL5/8"X15 7/8"	1'-10 3/4"		64	29
LSS-19	P351	1	PL16X441	635	A572-50	PL5/8"X17 5/16"	2'-1"		78	35
FIELD BOLTS										
LSS-19		10		70		3/4" DIA A325SS_TC	2 3/4"	1HD WASH	7	3
BEAM - 101206B1 TOTAL WEIGHT (Lbs / Kg) : 2572 1167										
BEAM - 101206B2										
LSS3	W896	2	W200X26.6	3058	A992	W8X18	10'-0 3/8"		358	163
LSS3-19	A119	8	L89X89X9.5	140	A572-50	L3-1/2X3-1/2X3/8	0'-5 1/2"		31	14
FIELD BOLTS										
LSS3-19		16		57		3/4" DIA A325SS_TC	2 1/4"	1HD WASH	10	4
BEAM - 101206B2 TOTAL WEIGHT (Lbs / Kg) : 399 181										
Total Weight (This drawing in Lbs/ Kg): 2971 1348										



1 - BEAM - 101206B1

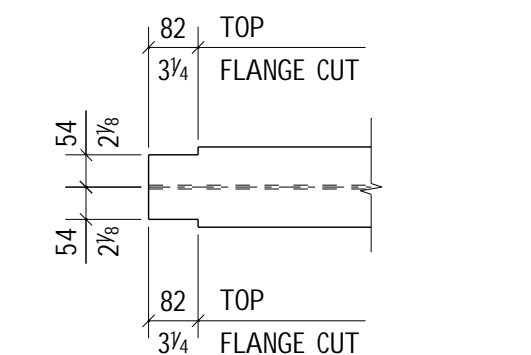
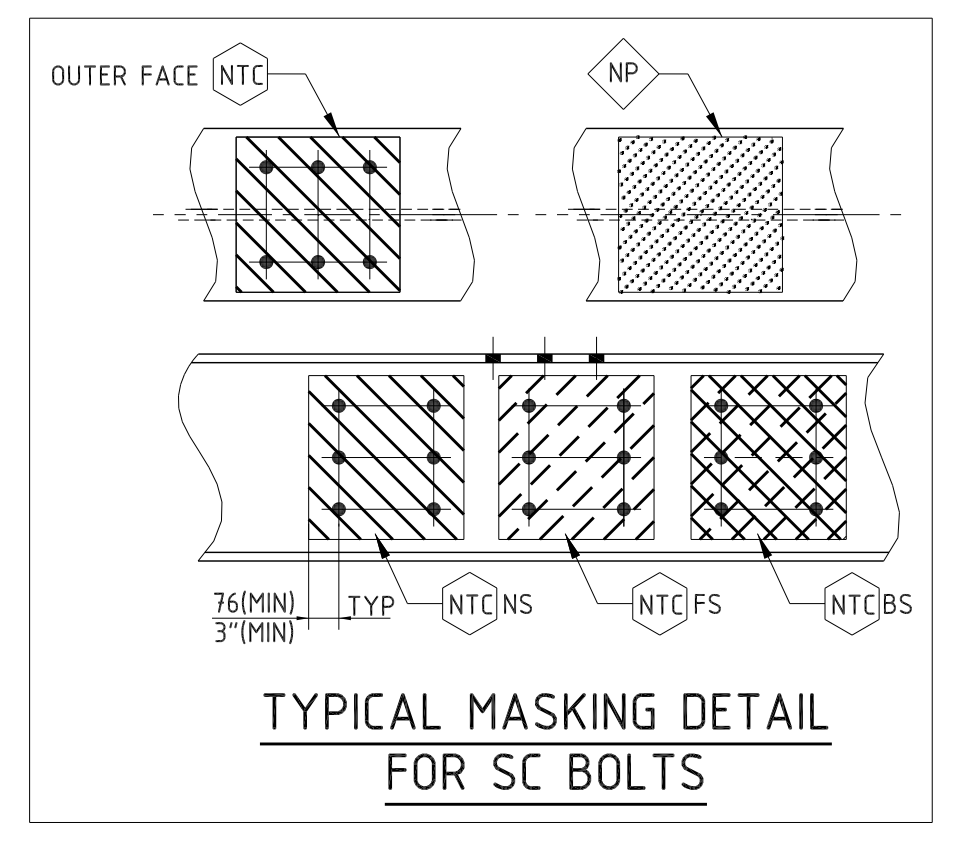


2 - BEAM - 101206B2

1 - QUANTITY INCREASED AND APPROVED AS 101206B3

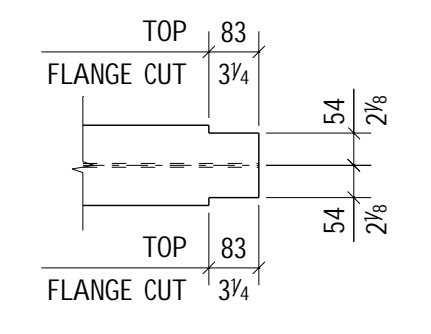
DELETED AND ADDED TO 101206B2

1 - BEAM - 101206B3



OTHERS NOT SHOWN FOR CLARITY

A - A



OTHERS NOT SHOWN FOR CLARITY

B - B

NP NO PRIME COAT  
NO TOP COAT  
NTC NO TOP COAT  
13 AROUND HOLE  
PRIMER RECD