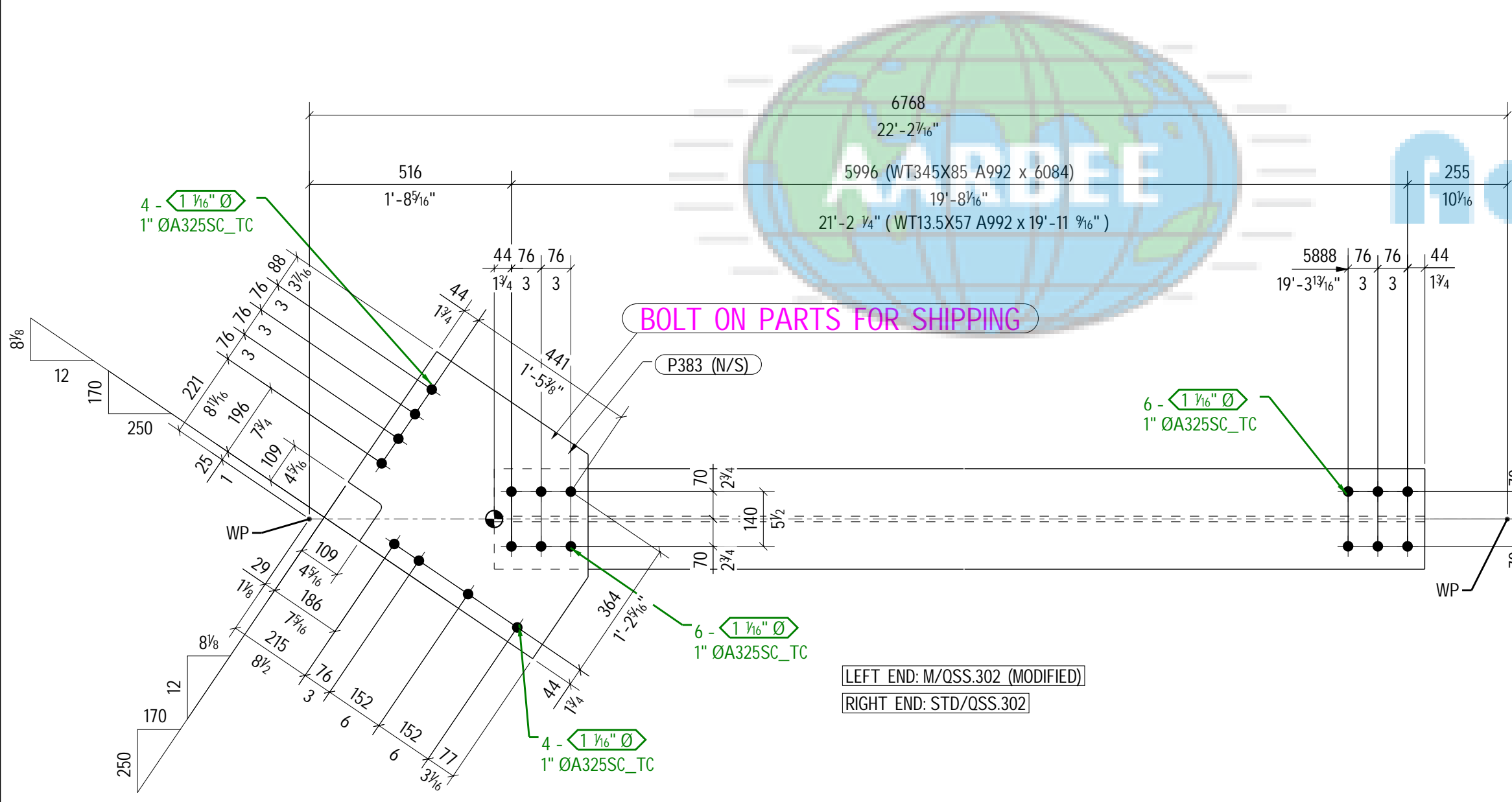
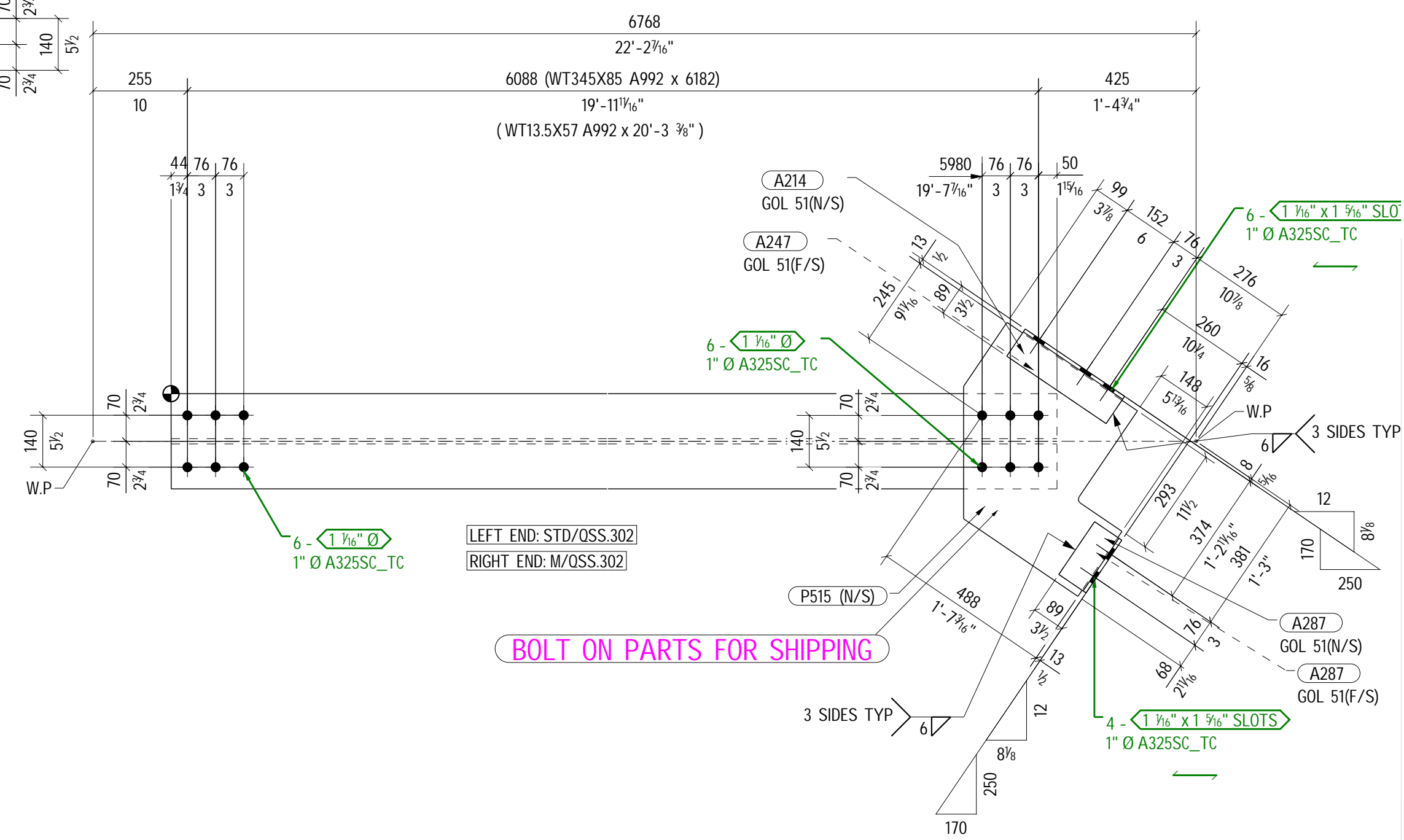


1 ~ HORIZONTAL BRACE ~ 101500H1



1 ~ HORIZONTAL BRACE ~ 101500H2



1 ~ HORIZONTAL BRACE ~ 101500H3

BILL OF MATERIAL

COST CODE	MARK	QTY TOTAL	SHAPE (Metric)	LENGTH (mm)	STEEL GRADE	SHAPE (Imperial)	LENGTH (Imperial)	REMARKS	WEIGHT TOTAL (Lbs)	WEIGHT TOTAL (Kg)
HORIZONTAL BRACE - 101500H1										
LS8	WT131	1	WT13.5X85	12665	A992	WT13.5X85	41'-6 5/8"	BOP	2373	1077
LS8-19	A214	1	L89X89X9.5	324	A572-50	L3-12X3-12X3/8	1'-0 3/4"		9	4
LS8-19	A247	1	L89X89X9.5	324	A572-50	L3-12X3-12X3/8	1'-0 3/4"		9	4
LS8-19	A456	1	L89X89X9.5	426	A572-50	L3-12X3-12X3/8	1'-4 3/4"		12	6
LS8-19	A457	1	L89X89X9.5	426	A572-50	L3-12X3-12X3/8	1'-4 3/4"		12	6
LS8-19	P224	1	PL20X690	902	A572-50	PL13'16"x27'1/8"	2'-11 1/2"		215	98
LS8-19	P355	1	PL12X629	644	A572-50	PL12'X24'3/4"	2'-1 3/8"		84	38
LS8-19	P356	1	PL12X492	588	A572-50	PL12'X19'3/8"	1'-11 1/8"		60	27
FIELD BOLTS										
LS8-19		14		64		1"DIAA325SC_TC	2 1/2"	1HD WASH	18	8
LS8-19		8		70		1"DIAA325SC_TC	2 3/4"	1HD WASH	11	5
LS8-19		4		83		1"DIAA325SC_TC	3 1/4"	1HD WASH	6	3
LS8-19		12		83		1"DIAA325SC_TC	3 1/4"	1HD WASH	18	8
LS8-19		12		76		1"DIAA325SC_TC	3"	1HD WASH	17	8
TOTAL WEIGHT (Lbs / Kg) :									2843	1290
HORIZONTAL BRACE - 101500H2										
LS8	WT130	1	WT13.5X85	6084	A992	WT13.5X85	19'-11 9/16"		1140	517
LS8-19	P383	1	PL12X512	644	A572-50	PL12'X20'3/16"	2'-1 3/8"		69	31
FIELD BOLTS										
LS8-19		8		64		1"DIAA325SC_TC	2 1/2"	1HD WASH	10	5
LS8-19		6		76		1"DIAA325SC_TC	3"	1HD WASH	8	4
TOTAL WEIGHT (Lbs / Kg) :									1228	557
HORIZONTAL BRACE - 101500H3										
LS8	WT132	1	WT13.5X85	6182	A992	WT13.5X85	20'-3 3/8"		1159	526
LS8-19	A214	1	L89X89X9.5	324	A572-50	L3-12X3-12X3/8	1'-0 3/4"		9	4
LS8-19	A247	1	L89X89X9.5	324	A572-50	L3-12X3-12X3/8	1'-0 3/4"		9	4
LS8-19	A287	2	L89X89X9.5	172	A572-50	L3-12X3-12X3/8	0'-6 3/4"		9	4
LS8-19	P515	1	PL12X505	574	A572-50	PL12'X19'7/8"	1'-10 9/16"		60	27
FIELD BOLTS										
LS8-19		6		64		1"DIAA325SC_TC	2 1/2"	1HD WASH	8	4
LS8-19		4		83		1"DIAA325SC_TC	3 1/4"	1HD WASH	6	3
LS8-19		6		76		1"DIAA325SC_TC	3"	1HD WASH	8	4
TOTAL WEIGHT (Lbs / Kg) :									1267	575
Total Weight (This drawing in Lbs/ Kg):									5338	2421



NO PRIME COAT
NO TOP COAT
NO TOP COAT
NO TOP COAT
PRIMER RECD