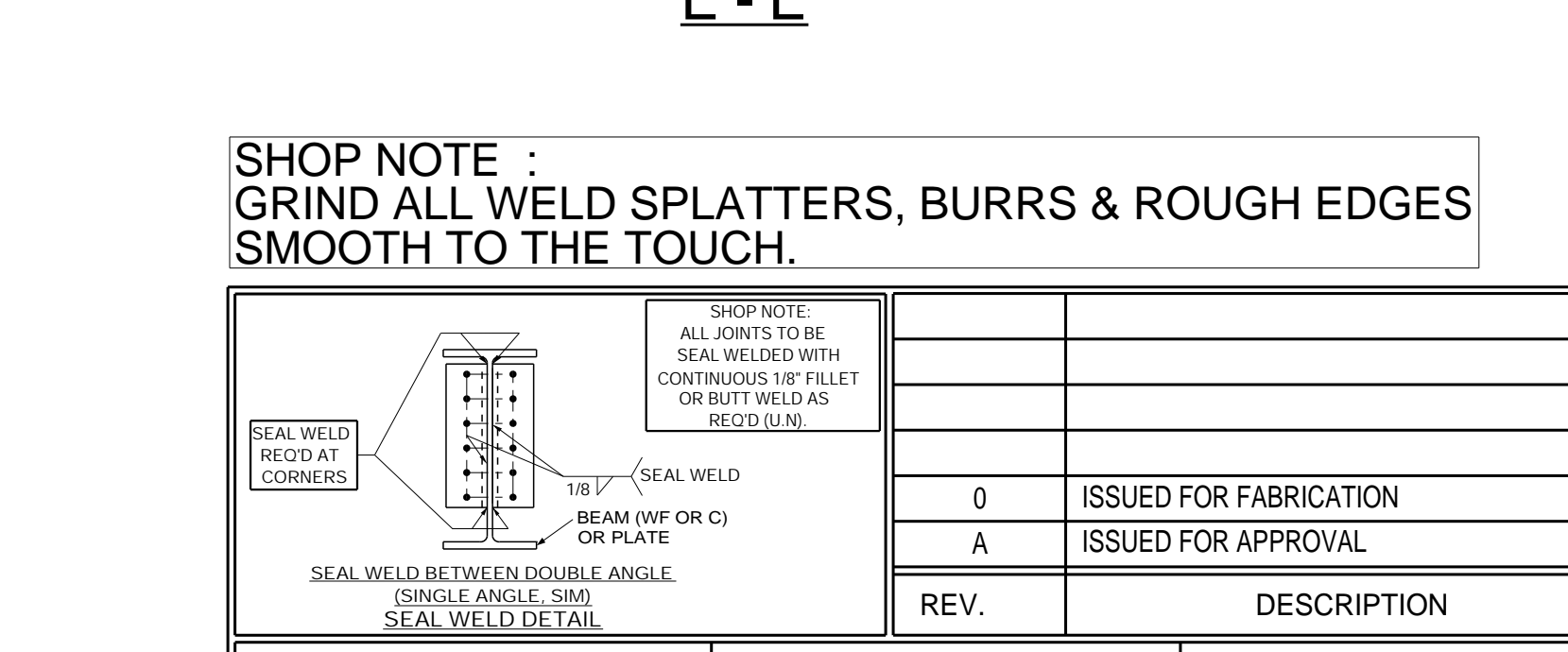
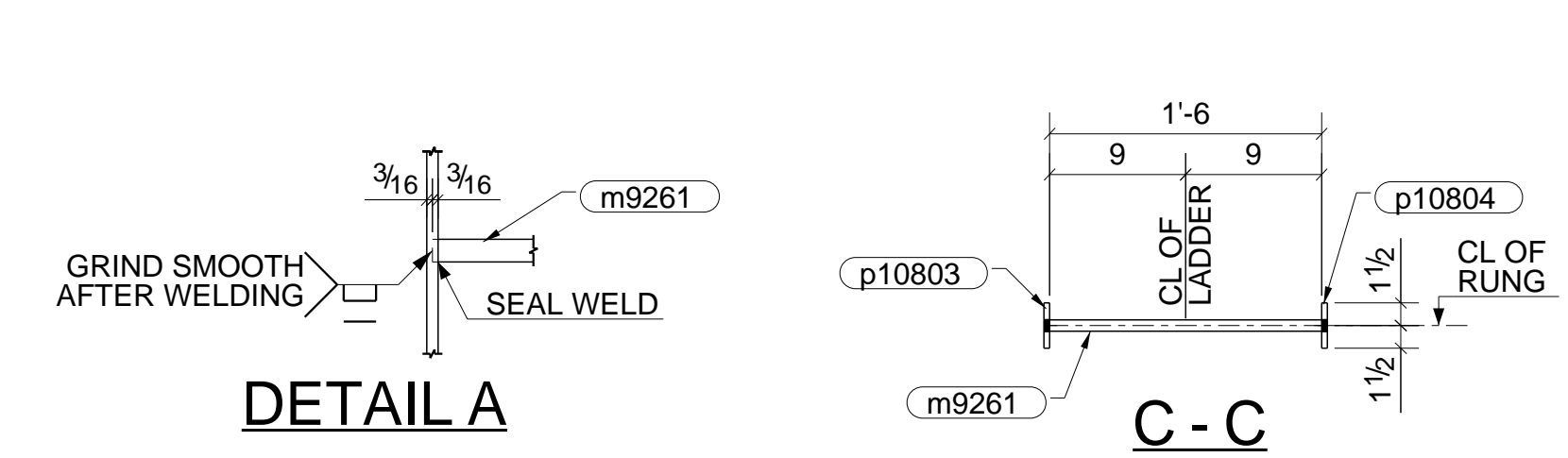
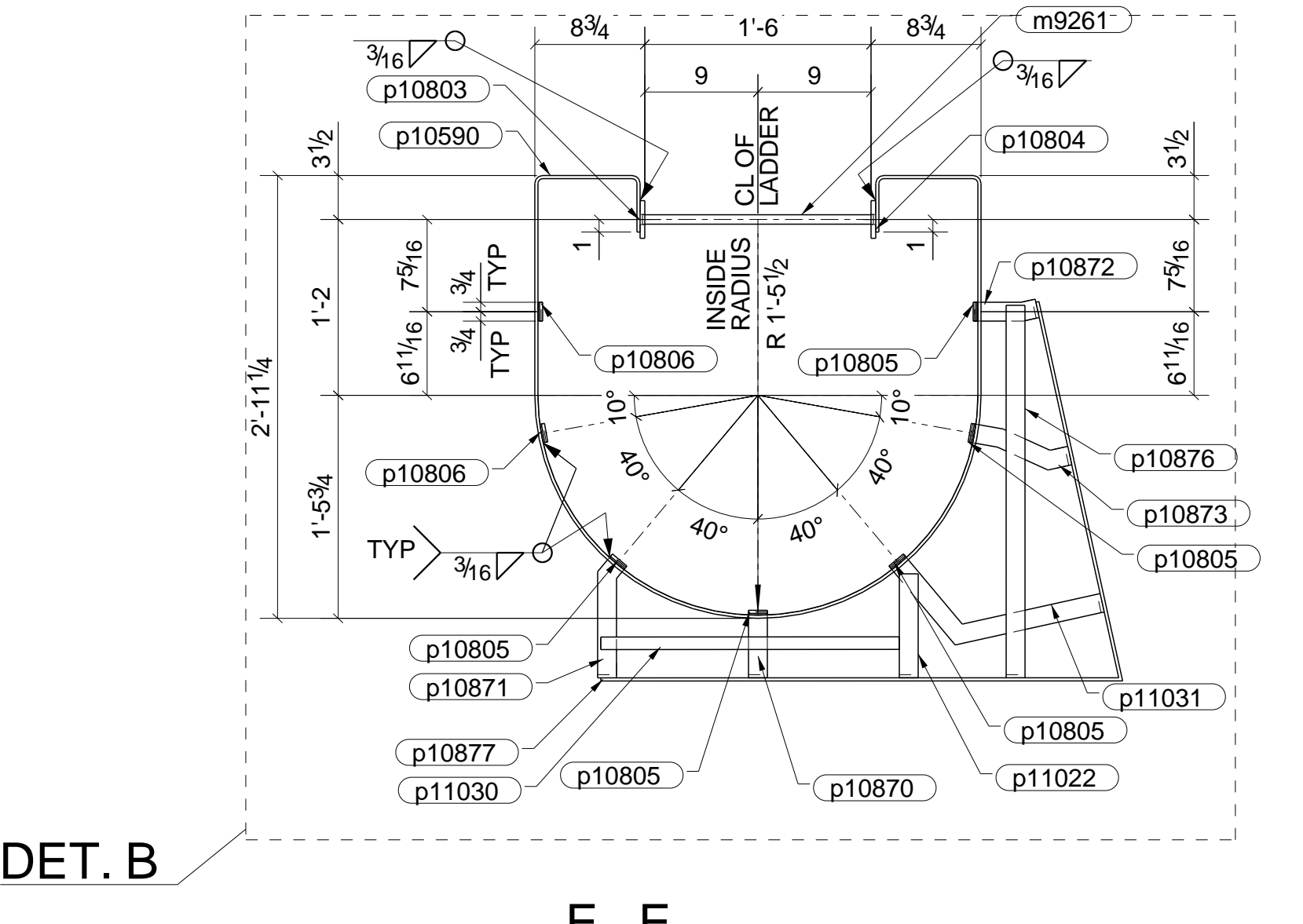
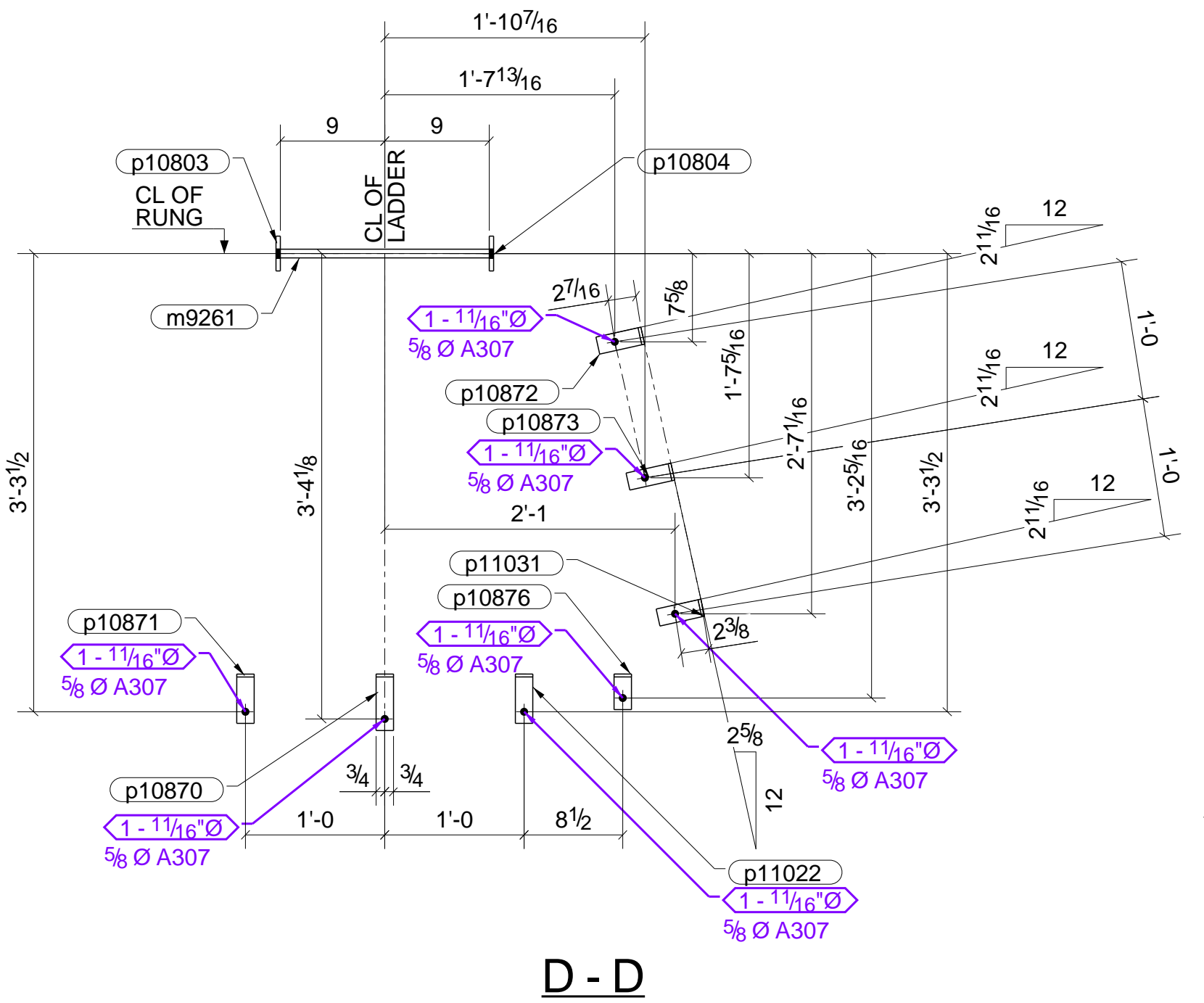
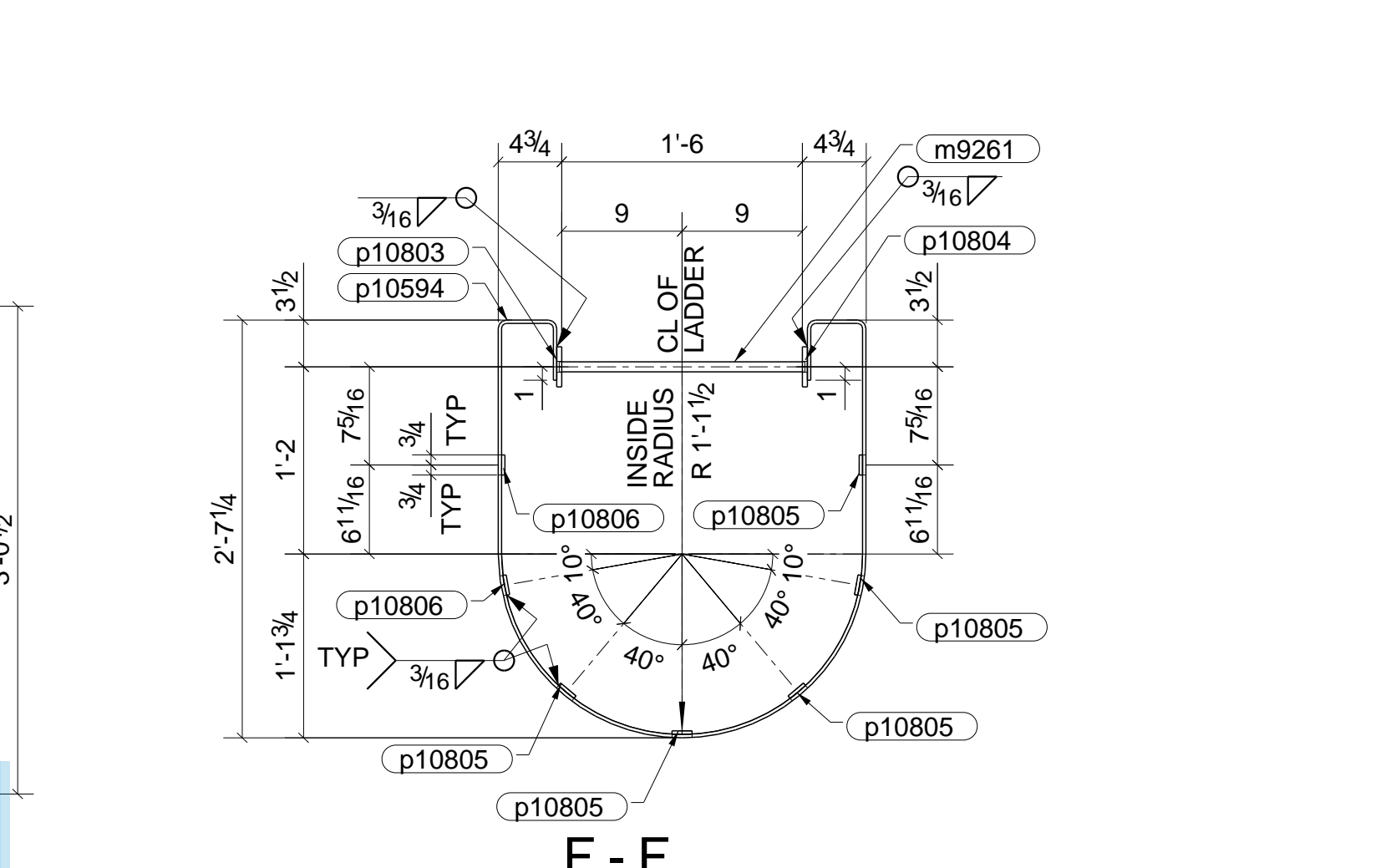
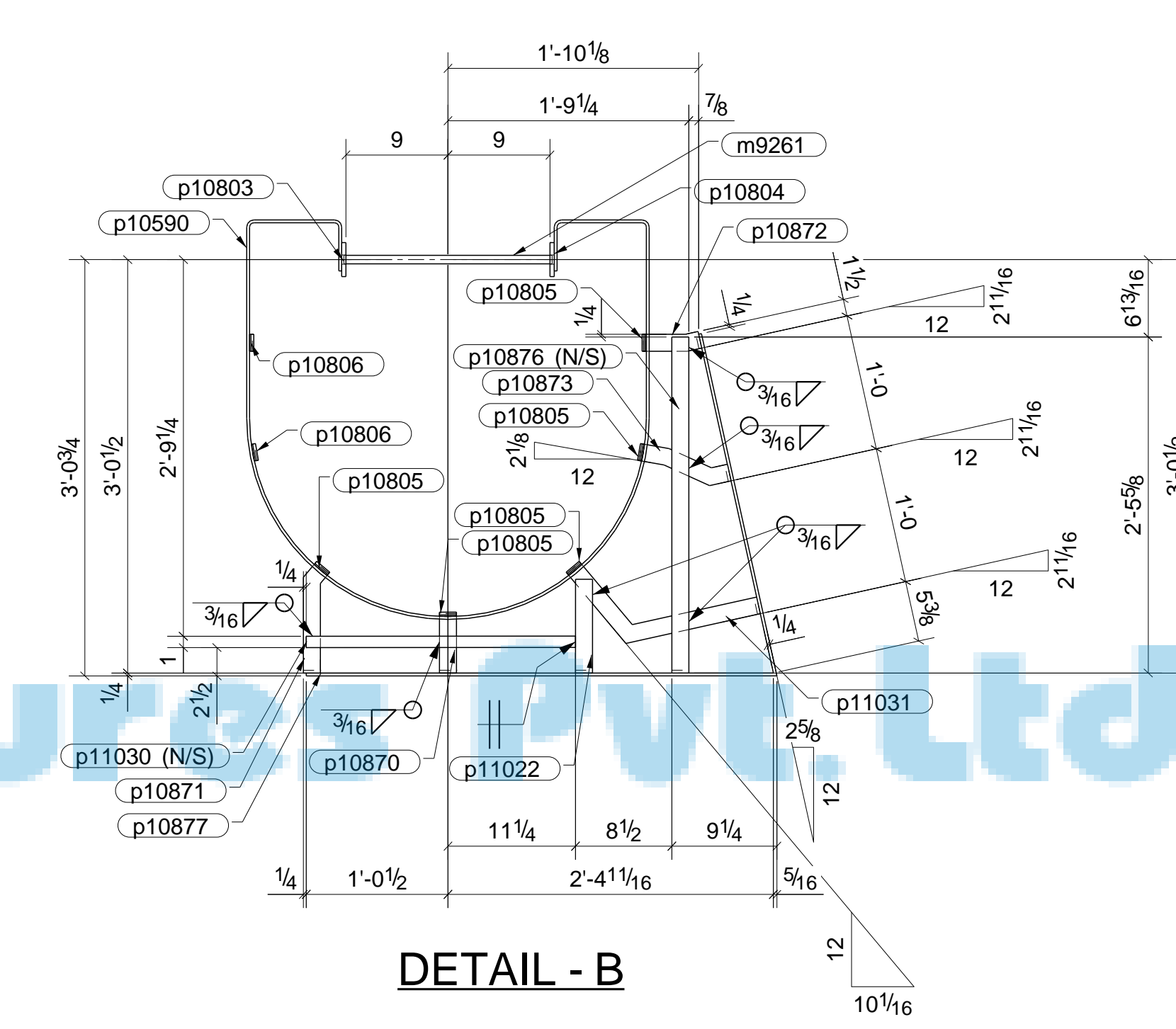
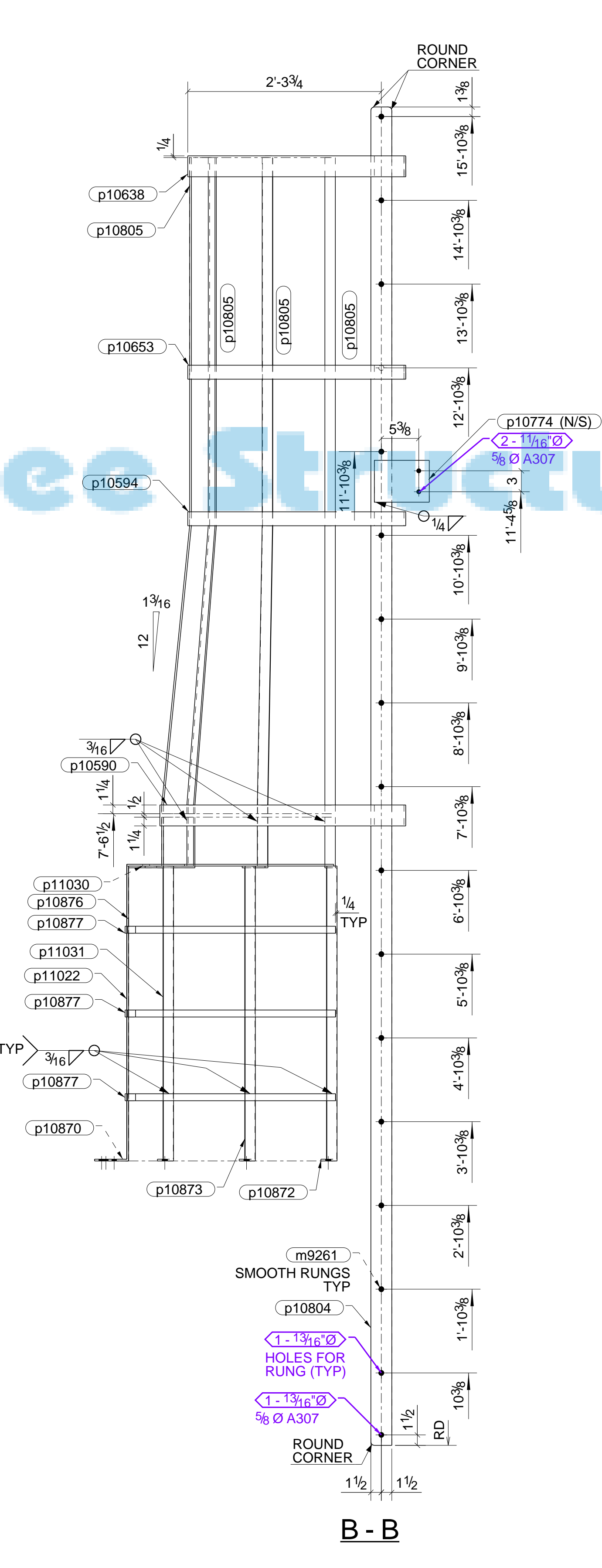
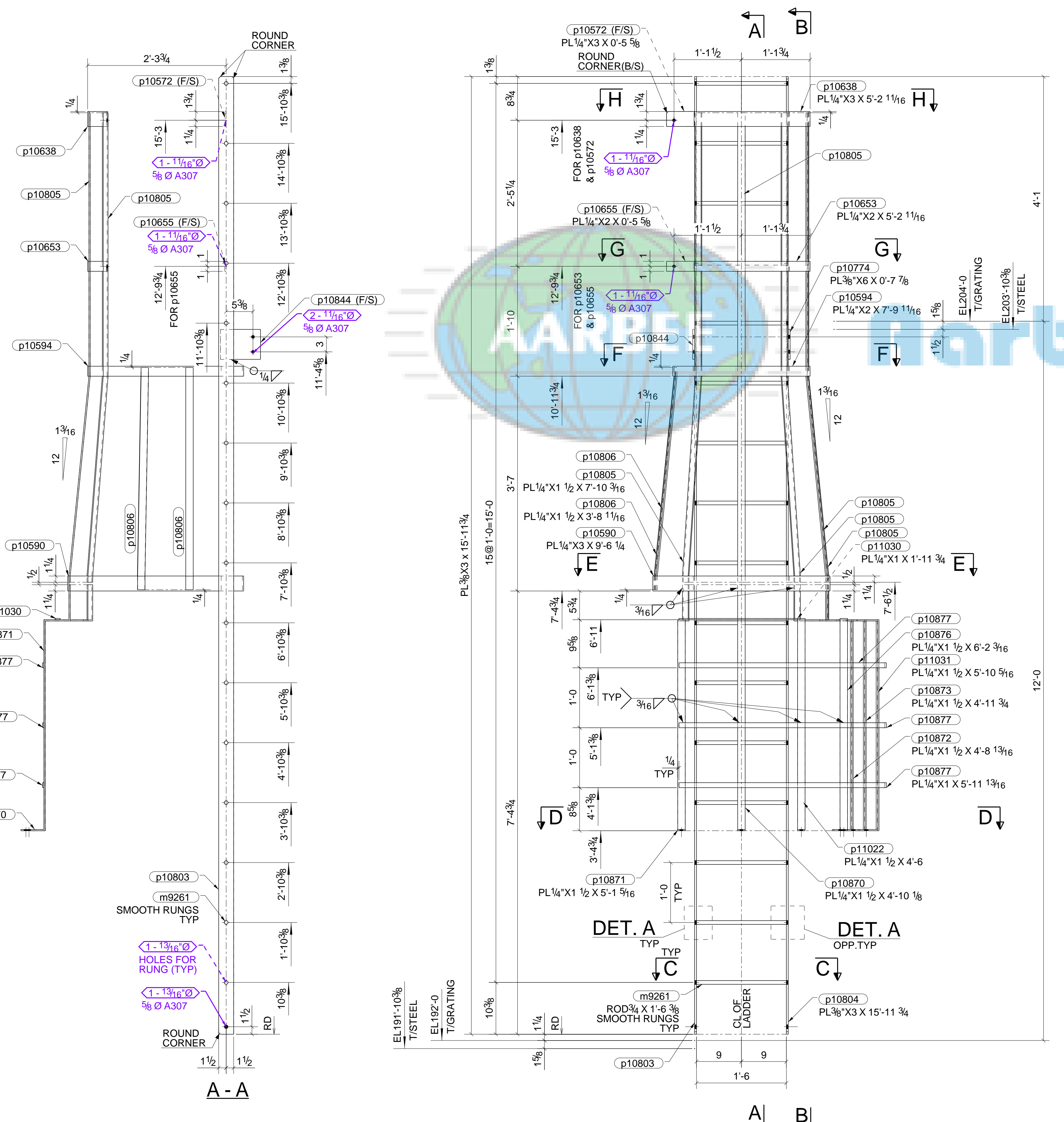
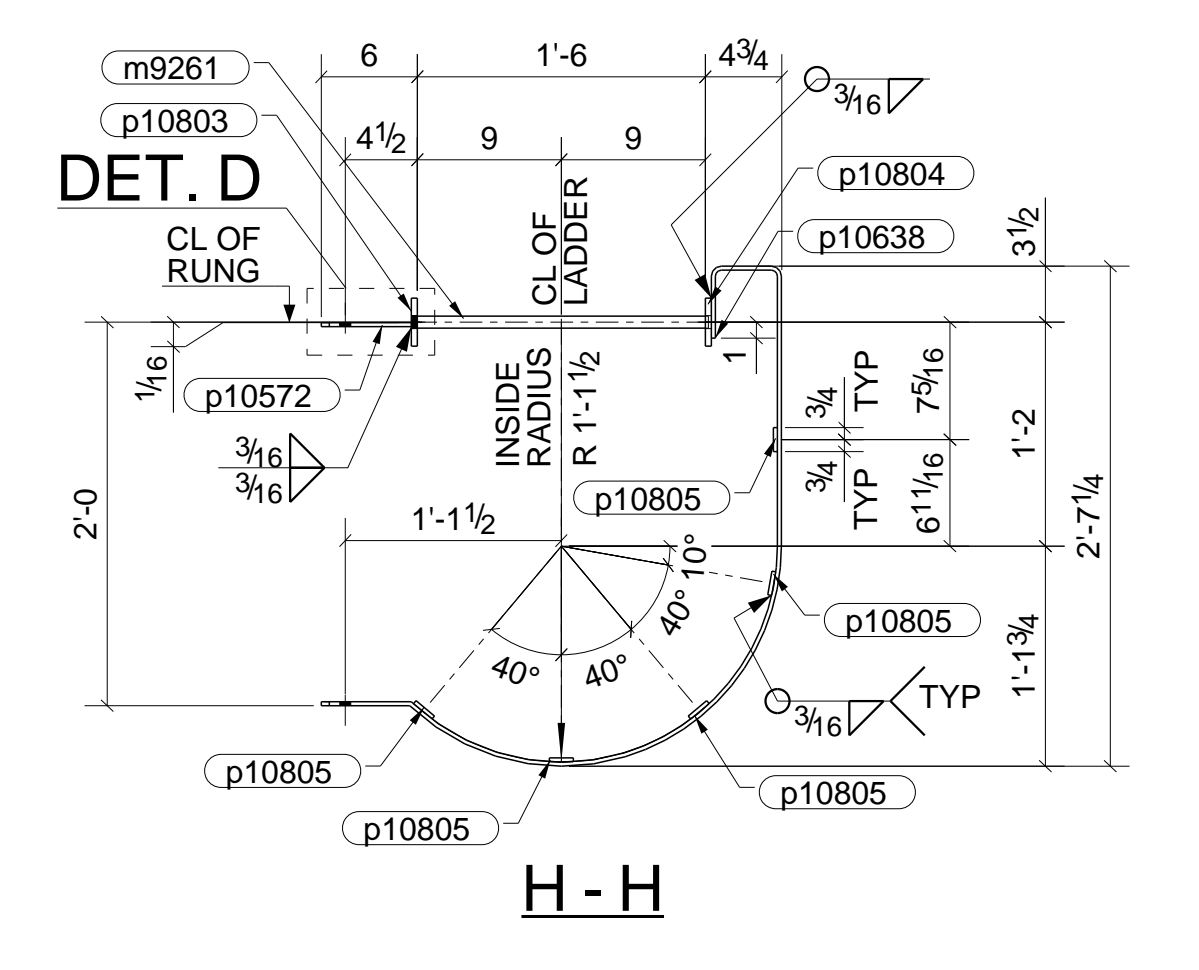
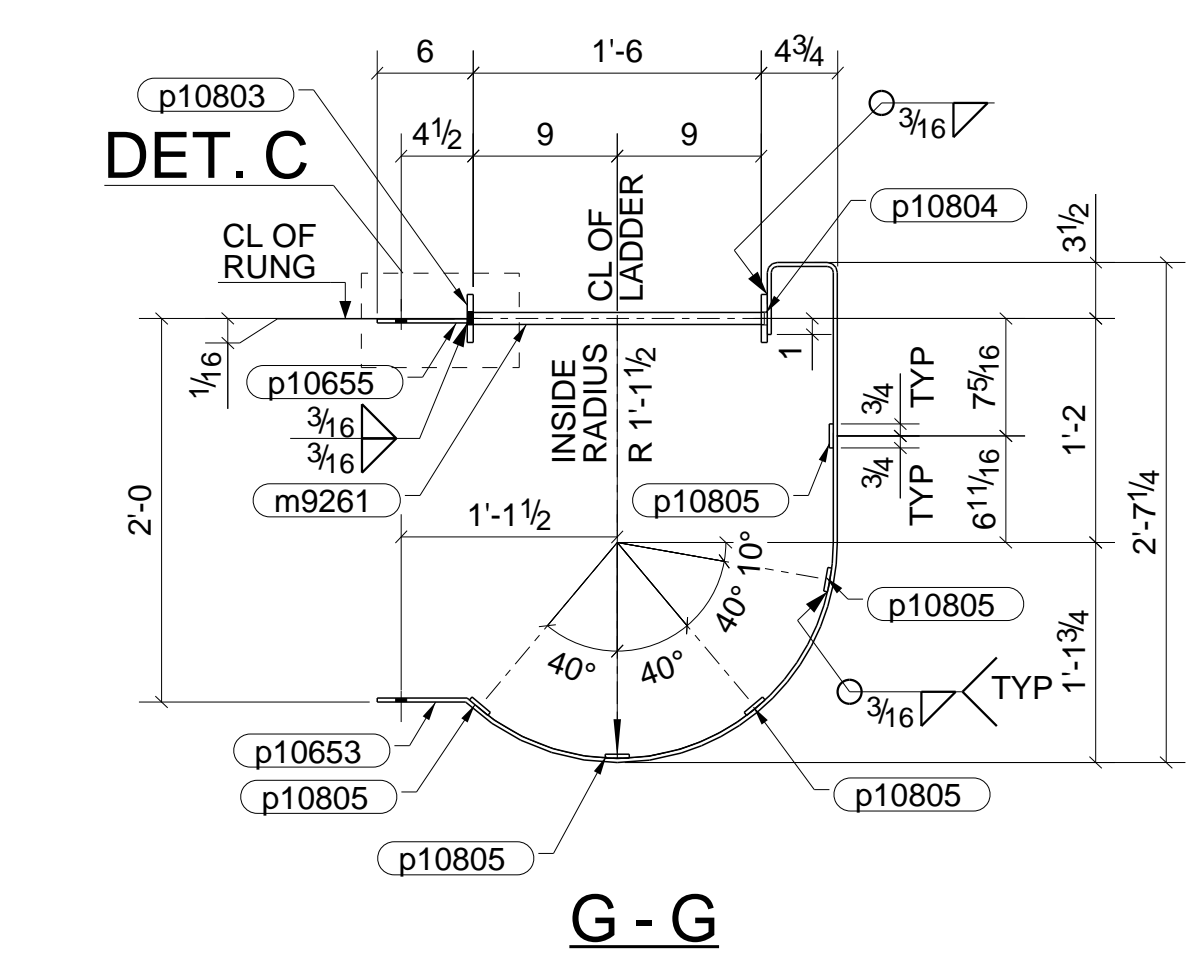
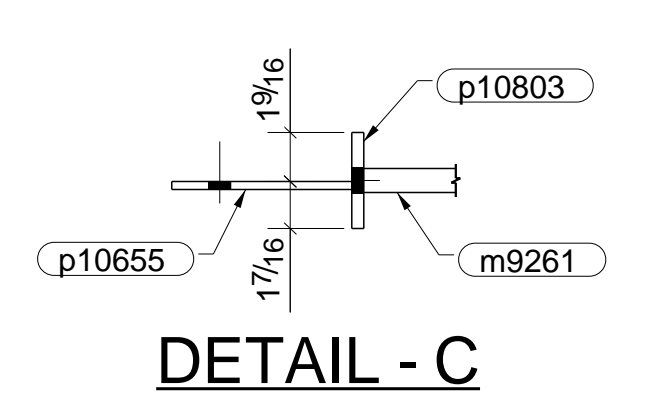
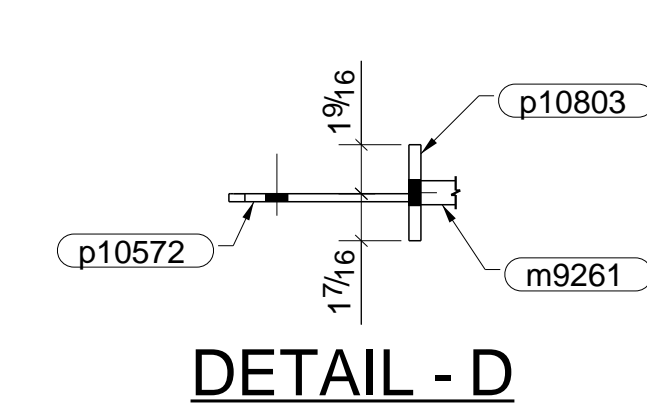


BILL OF MATERIAL		MARK	QTY	DESCRIPTION	LENGTH	FAB. MARK	P.M.	PREP	NOTES	PAY CODE
3000	57-402-300L3	ONE	1	LADDER	16'-0"					L13
			16	ROD3/4"	15'-11 3/4"	p10803				A572-60
			1	PL3/8"x6"	7'-6 3/8"	m9261				A572-60
			1	PL3/8"x6"	0'-8"	p10844				A572-60
			1	PL3/8"x3"	15'-11 3/4"	p10804				A572-60
			1	PL1/4"x3"	0'-5 5/8"	p10572				A572-60
			1	PL1/4"x3"	7'-6 1/4"	p10590				A572-60
			1	PL1/4"x2"	5'-2 1/16"	p10805				A572-60
			1	PL1/4"x2"	7'-9 1/16"	p10594				A572-60
			1	PL1/4"x2"	5'-2 1/16"	p10653				A572-60
			1	PL1/4"x2"	0'-5 5/8"	p10655				A572-60
			3	PL1/4"x1"	5'-11 13/16"	p10877				BENT A572-60
			1	PL1/4"x1"	11'-3 3/4"	p11030				BENT A572-60
			5	PL1/4"x1 1/2"	7'-10 3/16"	p10805				BENT A572-60
			2	PL1/4"x1 1/2"	3'-8 1/16"	p10806				BENT A572-60
			1	PL1/4"x1 1/2"	4'-10 1/8"	p10870				BENT A572-60
			1	PL1/4"x1 1/2"	5'-1 5/16"	p10871				BENT A572-60
			1	PL1/4"x1 1/2"	4'-8 1/16"	p10872				BENT A572-60
			1	PL1/4"x1 1/2"	4'-11 3/4"	p10873				BENT A572-60
			1	PL1/4"x1 1/2"	6'-2 3/16"	p10876				BENT A572-60
			1	PL1/4"x1 1/2"	4'-0"	p11022				BENT A572-60
			1	PL1/4"x1 1/2"	5'-10 5/16"	p11031				BENT A572-60



SHOP NOTE :
GRIND ALL WELD SPLATTERS, BURRS & ROUGH EDGES SMOOTH TO THE TOUCH.

REV.	DESCRIPTION	DATE
0	ISSUED FOR FABRICATION	10/4/2021
A	ISSUED FOR APPROVAL	10/4/2021

MATERIAL	CONNECTIONS	GENERAL NOTES
WF #1017888 ANGLES A572 GR.50 (U.N.) PLATES A572-60 (U.N.) ESS A500 (C.C. (U.N.) ALL OTHER A36 (U.N.)	HOLES : 1/16" Ø (U.N.) FIELD BOLTS : 3/4" Ø A325 (U.N.) ELECTRODES: E70 (LH)	ALL RUNNING DIMENSIONS FROM END OF MAIN MATERIAL ALL VERTICAL SPACING OF HOLES TO BE 3" UN. ALL RE-ENTRANT CUTS RADIUS (R=1/2" MIN.) ALL BEAMS TO BE FABRICATED WITH RESIDUAL CAMBER UP ALL H.S. SHOP BOLTS TO BE FULLY PRE-TENSIONED U.N. B'S INDICATES SHOP BOLT AFTER COATING ST INDICATES 'SNUG TIGHT' QC GAGE ALL WELDS COLOR : ERECTION DRWG. NO. 57-402-E300-910 & 919

LEGEND	DESCRIPTION	DATE
◊ PRIMER ONLY	DESCRIPTION LADDER DETAILS	SBS 09/24/2021
□ NO PAINT	PROJECT VALERO - DGD3 STL - 001 PROJECT / ISBL ECOFINER STEEL	CHKD BY ANH 10/04/2021
◆ SLIP CRITICAL CLASS 'B'	CUSTOMER: BURNS & MCDONNELL	
WHERE MARKED, MASK FAYING SURFACES: NO PAINT PRIMER ONLY		
RELEASED FOR: FABRICATION		

ONE-LADDER-57-402-300L3

21-04
DRAWING NUMBER SHEET REV
300L3 1 0